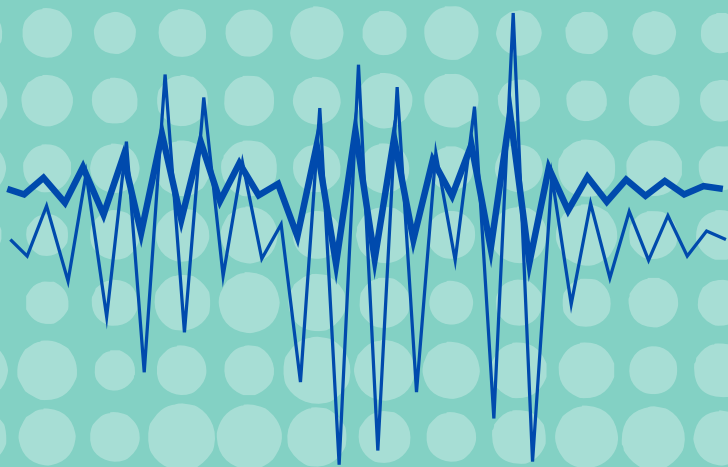
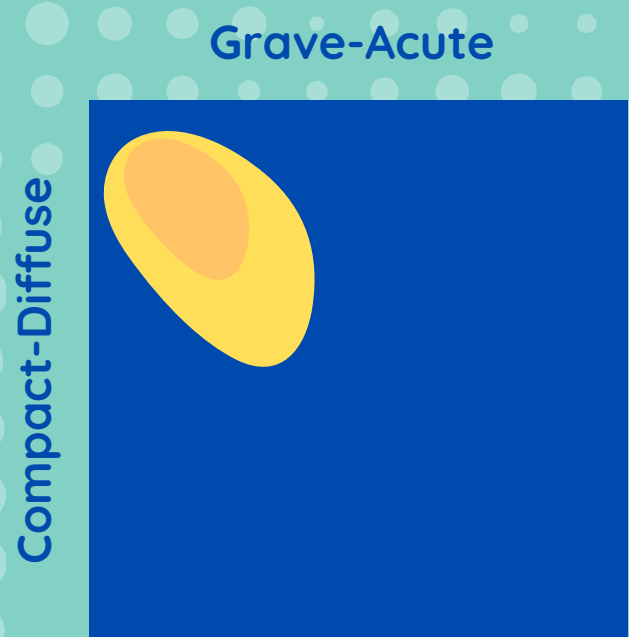


Developmental Phonology

(F)

A gestural score for a CV syllable composed of a coronal sibilant combined with a rounded grave vowel;



(E)

Acoustic-phonetic representations of linguistic units, in this example the vowel [u] derived from the distribution of F1-F2 values in the grave corner of the vowel space

(D)

Stored acoustic exemplars, in this hypothetical example, the child's name as produced by the mother, the father, and an older sibling

(B)

The semantic representation for "Sue" stored in the lexicon

(C)

The child's experience with speech in the form of babbled syllables

(A)

Language Input

(G)

An emergent phonological representation for the word that reflects the child's experience with the phonetic characteristics of the word, the linkages between the representations of the word in multiple domains and the similarities and differences between this word and others in the lexicon at multiple levels of the phonological hierarchy.



Schematic of the emergence of phonological representations from the child's experience with language at multiple levels of representation. Original artwork created by Edith Lebel.