

4 MULTI-LINGUISTIC LANGUAGE SYSTEMS AND THEIR DIFFERENT SENSORY INPUT & OUTPUT MODALITIES.

Alternative Research-Based Approach of Defining SLDs

Reading and writing are multi-modal processes that involve sensory inputs of language by eye and by ear (seeing the letters and hearing the phoneme sounds they represent when reading out loud) and motor outputs of language by mouth and by hand (saying the phoneme sounds and writing the letters that represent those phonemes). These multi-modal processes are used to decode and encode language – which itself is not a sensory or motor process – at multiple levels: subword, word, syntax, and text.

Jan Wasowicz PhD, CCC-SLP
Founder, President & CEO | Learning By Design, Inc.
SPELL-Links Author



Multi-modal literacy instruction= sensory input to the language systems + motor output from the language systems.

Subword = any linguistic unit smaller than a word.

Evaluate each of four multi-linguistic language systems that are related with various multi-modality sensory input or motor modes.

Presented by: Dr. Virginia Berninger

1 LANGUAGE BY EAR (AURAL LISTENING)

Subword, word, grammar, and conversation.

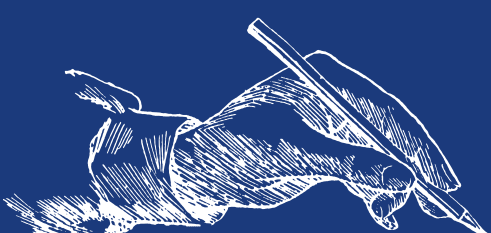
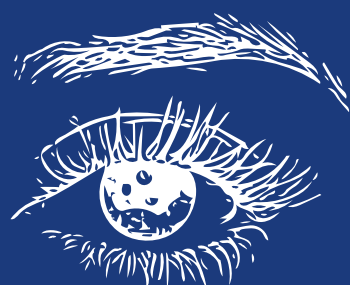


2 LANGUAGE BY MOUTH (ORAL PRODUCTION)

Subword, word, grammar, and conversation.

3 LANGUAGE BY EYE (READING)

Subword, word, grammar, and text.



4 LANGUAGE BY HAND (WRITING)

Subword, word, grammar, and text.